



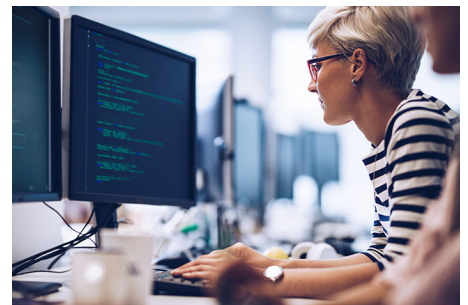
## Higher Education Textbook Publisher Streamlines Procurement with Custom Technology Solution

# BEYOND INK



### Background

The publisher's custom courseware system allows professors to build customized books specific to their classes, assigning each a unique identifier. At any time, their system could generate hundreds to thousands of orders daily, needed within tight delivery windows.



**"BR's ability to integrate with our system and output a high volume of orders in extremely small time constraints helps us meet the demands of our customers and stay one step ahead of our competitors."**



# Higher Education Textbook Publisher Streamlines Procurement with Custom Technology Solution

BEYOND INK

## CHALLENGE

### Challenge

Handling a volume of 1 to 300 daily book orders, each ranging in quantity from 1 to hundreds, was impossible to manage manually. The publisher sought an automated digital workflow, connecting directly to their print-on-demand partner.

## SOLUTION

### Solution

Working jointly with the publisher's IT department, BR employed its A2A integration solution, connecting the publisher's order management system directly to the production operation. Orders automatically flow directly from the publisher's courseware system in the form of preflighted files, the purchase order specifications are uploaded into the production system, and the jobs are scheduled for immediate printing and finishing. The automation also builds book covers from 50 shell designs.

## RESULT

### Results

- The integration eliminates the need for any individual to manually touch an order
- The publisher is able to quickly and easily shift orders from vendor to vendor should capacity constraints arise
- Publisher to vendor order processing time is essentially eliminated due to the automation
- Book turn times are faster—desk copies in 1 to 3 days; bookstore or warehouse copies in 3 to 5 days
- Shipment tracking information is communicated back through the integration
- Invoicing has been simplified and accuracy has been improved
- The publisher has gained internal workflow efficiencies
- The publisher was able to streamline their vendor network



BEYOND INK

CONTACT US →

WEB: [brprinters.com](http://brprinters.com) EMAIL: [info@brprinters.com](mailto:info@brprinters.com)

**San Jose CA**  
(HQ, CMC, & EPIC)  
665 Lenfest Rd.  
San Jose, CA 95133  
408-278-7711

**San Diego, CA**  
(CDM)  
7606 Miramar Rd.  
#7200  
San Diego, CA 92126  
856-677-1727

**Denver, CO**  
(BR DENVER)  
5050 Moline St.  
Denver, CO 80239  
303-765-1383

**Denver, CO**  
(ROSS4MARKETING & C&D PRINTING)  
550 East 76th Ave.  
Denver, CO 80229  
303-287-3217

**Independence, KY**  
(BR KENTUCKY)  
10154 Toebben Dr.  
Independence, KY 41051  
859-292-1700

**Appleton, WI**  
(NGS)  
2600 North Ballard Rd.  
Appleton, WI 54911  
920-734-7500

**Cincinnati, OH**  
(BR OHIO)  
3962 Virginia Ave.  
Cincinnati, OH 45227  
800-598-7808